

# SIMPLE SETUP

As Easy as 1... 2... 3!

- (1) Mount IntelliSensor™ on Any Equipment Requiring Monitoring
- (2) Plug In IntelliGate™ (Ethernet Connection and Standard Power Outlet)
- (3) View Data and Receive Alerts in Real-Time

Our sensors have the strongest transmitter on the market.

## YOUR EQUIPMENT



If Wi-Fi is not an option, we also have a system that operates on the 802.15.4 ZigBee® standard. With ZigBee®, there is an additional IntelliGate™ (Gateway) that plugs directly into your network via an Ethernet cable and standard power outlet. The Sensors transmit data wirelessly to the IntelliGate™.

## REAL TIME DATA



Cold Chain



Coolers/Freezers



CO<sub>2</sub> Tank



Milk Shake/Ice Cream Machine



Hot Water Heater



Food Prep Temperature

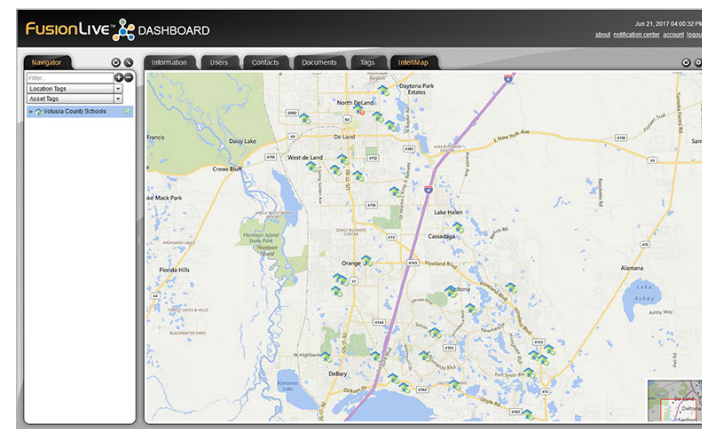
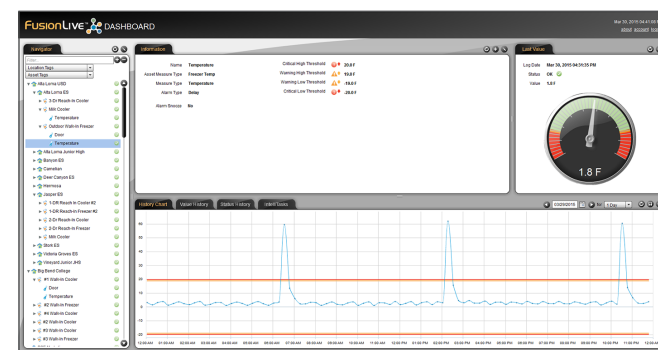
## DATA AND REPORTS

As soon as the system is installed, valuable data will immediately begin transmitting to the system. All of your data will be stored securely in ECS' secure private cloud with server redundancy and automated system backups, making sure your data is never lost.

You will be able to view all of your data in real time, as well as print out dozens of reports, including a Daily Summary Report and a unique Executive Summary Report, which shows you the general health of your entire operation and allows you to take corrective actions on the spot.

### FusionLive™ Software

Versatile Reporting • IntelliSense™ Temperature Graph



14724 Ventura Boulevard  
Suite 1200  
Sherman Oaks, California 91403

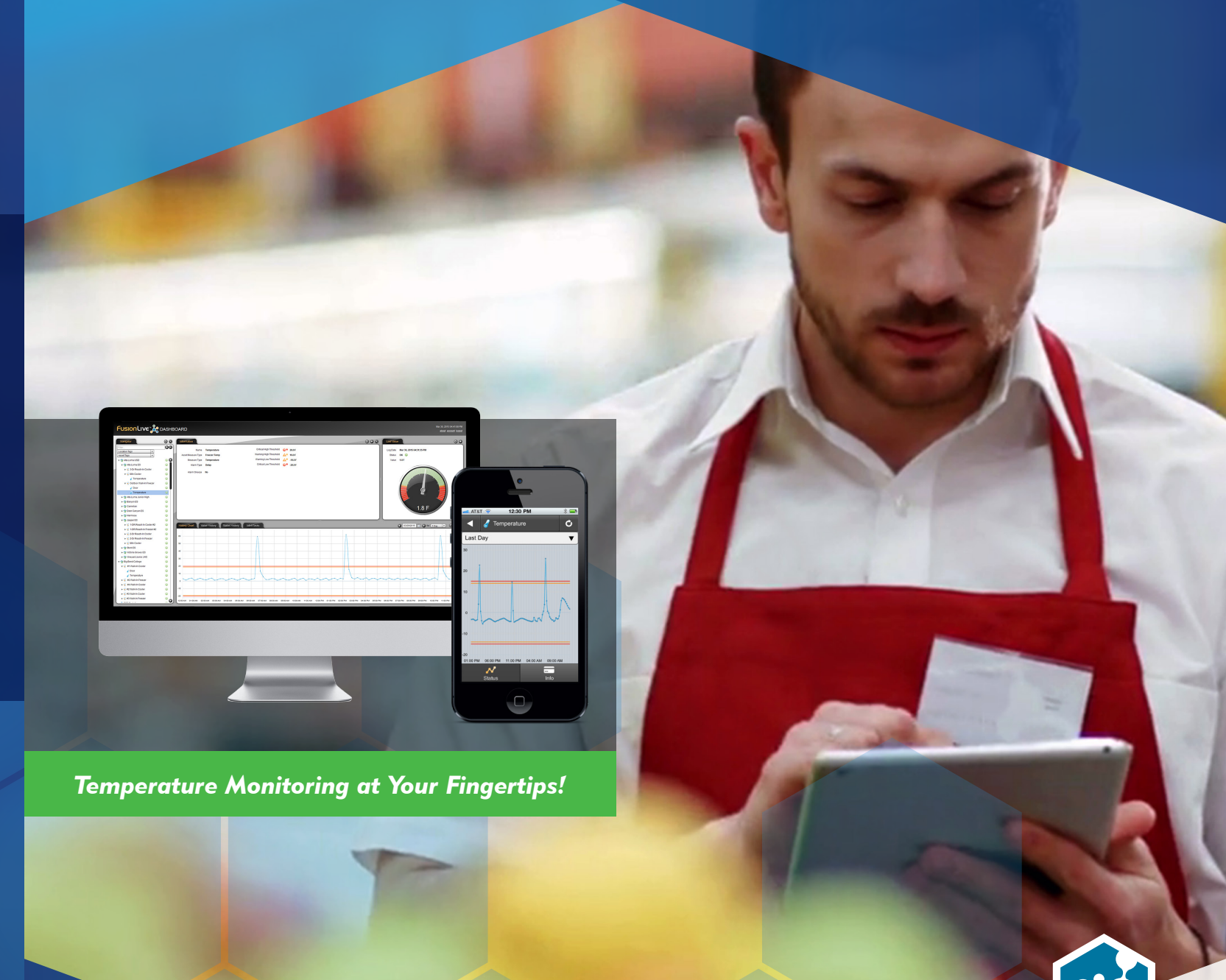
Tel: (818) 783-5229

Toll Free: (888) 384-3274

Email: [Sales@EControlSystems.com](mailto:Sales@EControlSystems.com)



[www.EControlSystems.com](http://www.EControlSystems.com)



Temperature Monitoring at Your Fingertips!

WE'RE THERE  
**SAFEGUARDING  
YOUR PRODUCTS**  
WHEN YOU ARE NOT!



Retail



Food Service



Healthcare



Life Science

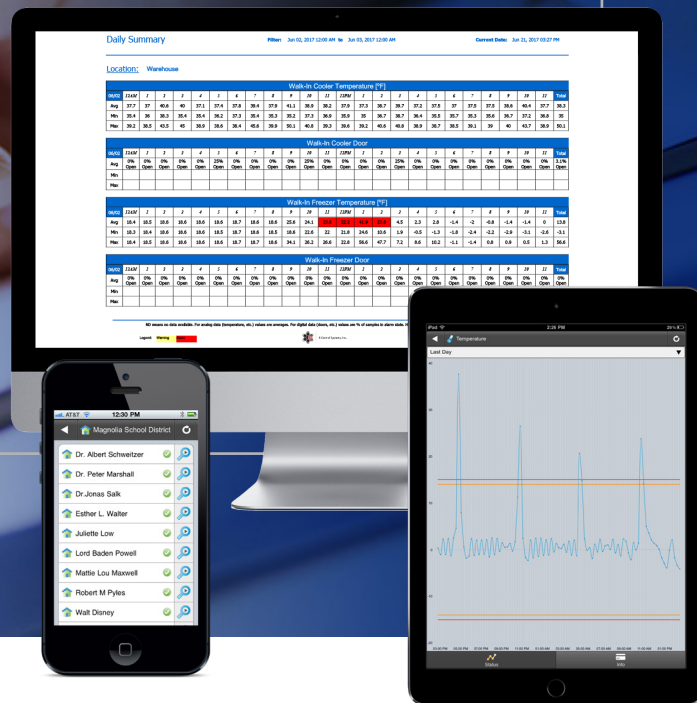
## Why ECS?



### STOP LIVING IN THE STONE AGE!

- Illegible
- Inaccurate
- Cumbersome
- Labor Intensive
- Risk of Product Loss
- Eliminate Paper Forms

### GO PAPERLESS WITH E-CONTROL SYSTEMS



E-Control Systems, Inc. was founded in 1998 and is a privately held corporation headquartered in Sherman Oaks, California. With Over 5,000 Installs throughout the country, E-Control Systems is the industry leader in wireless temperature monitoring solutions.

Inspired by a growing need for more sophisticated monitoring of temperature and other critical points, E-Control Systems, Inc. has evolved into a full-service industrial and commercial application monitoring solution provider. E-Control Systems' technical innovations have been driven by the desire to meet the ever-changing market needs and increasing regulatory requirements related to monitoring of food, drugs, manufacturing processes and controls (including FDA, The Joint Commission, AABB, GLP/GMP, FCC, and HACCP).

### BENEFITS OF ECS

- Wireless 24/7 monitoring
- Alarm Notifications
- Eliminates cumbersome manual daily logging
- Accountability - Eliminates room for error
- Corrective Actions can be taken on the spot
- Asset Management
- Preventative Maintenance
- Meets the CDC Vaccine for Children (VFC) requirements
- View system 24/7 from anywhere via computer, smart-device, or tablet
- Dozens of reports available, including Daily Summary and a unique Executive Summary

### INTELLISENSOR™ HARDWARE

- Large Easy to Read Display – Always on
- Audible/Visual Alarm
- Customizable Display
- Uses standard Alkaline batteries
- Optional power supply
- Data Loggers



### FUSIONLIVE™ SOFTWARE

- Web-Based Hosting Solution
- Supports 21 CFR Part 11 Compliance
- Intuitive User Interface
- Interactive Floor Plan Feature
- Over 20 Reports Available
- Asset Management/Preventative Maintenance
- Track SOP Tasks and Upcoming Calibrations

Available in both Wi-Fi and ZigBee®

### WHAT WE MONITOR

- Walk-ins (Temp & Door)
- 4 °C Refrigerators
- -20 °C Freezers
- -80 °C Ultra Low Temperature (ULT) Freezers
- Liquid Nitrogen Tanks (LN2)
- Incubators (Temp, Humidity, CO2)
- Pressure of CO2 Tanks
- Differential Pressure
- Moisture/Water Leak
- Clean Room (Temperature, Humidity, Differential Pressure)
- Main Power Interruption (On/Off)
- Room Monitoring (Ambient Temp & Humidity)

### WHERE WE MONITOR

- Pharmacy
- Blood Bank
- Plasma Bank
- Laboratory
- Operating Room
- Isolation Room
- IT Room
- Emergency Room
- Radiology
- Nurses' Stations
- Nutrition Services

### BENEFITS

- 24/7 Alerts Via e-mail, text, page and optional voice call
- Real Time Monitoring via computer, smart phone or tablet
- Supports FDA 21 CFR Part 11 Compliance
- Scalable System – can add unlimited monitoring points at any time
- All locations and equipment can be viewed from centralized FusionLive™ software
- Calibrated NIST Traceable Probes Available
- On-Site NIST Calibration Available
- Asset Management module that comes standard with the system can track calibration of assets
- Track SOP Tasks and Upcoming Calibrations

### ECS CLOUD

- Secure, Private Cloud
- Server Redundancy
- Automatic Backups, makes sure that data is never lost

With E-Control Systems' hosted solution in the cloud, all of your data is stored securely in the cloud and available for you to view 24/7 from any computer, smart phone, or tablet. Besides being able to view your operation from anywhere, at any time, some of the benefits of our hosted solution in the cloud include: (1) never having to worry about costly server space, or if your server goes down; (2) E-Control Systems can act as an extra set of eyes, should a problem arise; (3) No need to ever upgrade software.

ECS Cloud-based storage helps you store your critical data securely. Data is stored in our secure private cloud with server redundancy and automated system backups, making sure that your valuable data is never lost. Besides never having to worry about losing data due to a system failure, with our secure cloud, your IT resources are not impacted.

### Why Choose ECS?



Feature	ECS Advantage	ECS	Competitors
Cost	✓	ECS sensor can monitor up to 4 points, making it very economical when combining adjacent equipment	Have to use 1 sensor per unit monitored, making it costly when monitoring a large number of units
Display	✓	Sensor display always on	Have to press a button on the sensor to wake up sensor
Transmitter Range	✓	Strongest transmitter on the market (5 times stronger than competitors)	Weaker transmitter, making range in a large area an issue
Maintenance / Asset Management	✓	True Asset Management and Preventative Maintenance Module comes standard with system. Ability to track all assets, even ones that aren't being monitored	Don't have true asset management/preventative maintenance - Have simple historical data chart
Reports	✓	Most comprehensive reports, with 20 different reports available, including Daily Summary and unique Executive Summary report	Basic reports available
Custom Dashboard	✓	Dashboard is Customizable, listing all active alerts on one screen	Not customizable
API - Integration	✓	Full feature API - allowing for seamless intergration with other software such as security systems, call centers, and existing energy management system	Not able to Integrate with other systems
Free App - available to download	✓	Free FusionLive App available to download for any smartphone or tablet	Mobile version of sites, not easy navigate/view operation

### WHAT WE MONITOR

- Walk-ins (Temp & Door)
- 4 °C Refrigerators
- -20 °C Freezers
- -80 °C Ultra Low Temperature (ULT) Freezers
- Liquid Nitrogen Tanks (LN2)
- Incubators (Temp, Humidity, CO2)
- Pressure of CO2 Tanks
- Differential Pressure
- Moisture/Water Leak
- Clean Room (Temperature, Humidity, Differential Pressure)
- Main Power Interruption (On/Off)
- Room Monitoring (Ambient Temp & Humidity)

### WHERE WE MONITOR

- Pharmacy
- Blood Bank
- Plasma Bank
- Laboratory
- Operating Room
- Isolation Room
- IT Room
- Emergency Room
- Radiology
- Nurses' Stations
- Nutrition Services

### BENEFITS

- 24/7 Alerts Via e-mail, text, page and optional voice call
- Real Time Monitoring via computer, smart phone or tablet
- Supports FDA 21 CFR Part 11 Compliance
- Scalable System – can add unlimited monitoring points at any time
- All locations and equipment can be viewed from centralized FusionLive™ software
- Calibrated NIST Traceable Probes Available
- On-Site NIST Calibration Available
- Asset Management module that comes standard with the system can track calibration of assets
- Track SOP Tasks and Upcoming Calibrations

